

# REDUCING WILDFIRE RISK IN OUR COMMUNITIES

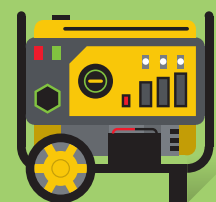


## ENTERPRISE COMMAND CENTER

Monitors wildfire conditions and supports event response

### SITUATIONAL AWARENESS:

Risk modeling software evaluates current and forecasted weather conditions, wind speed, moisture and ground fuel conditions to predict potential wildfire spread



## SAFETY AND PREPAREDNESS

We provide safety tips to help you prepare for potential wildfires and power outages

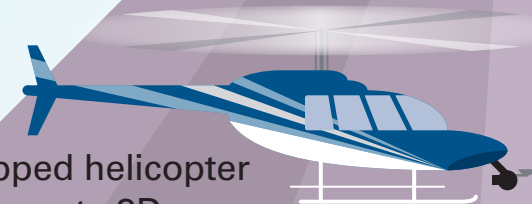
## UNDERGROUNDING

Burying power lines, where possible, helps reduce wildfire ignition risk



## LiDAR

LiDAR equipped helicopter inspections create 3D maps of our equipment to perform wind strength analysis



## WILDFIRE DETECTION CAMERAS

AI-enhanced cameras speed the process of wildfire detection and response



## WEATHER DATA

Local weather conditions are used to inform Wildfire Safety Settings and when we can perform work safely



## DRONE INSPECTIONS

Inspecting the electric system to identify equipment needing repair

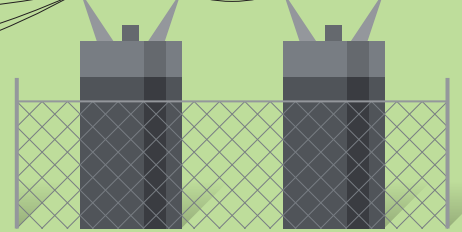


## COMMUNITY OUTREACH

Connecting with local stakeholders to understand the unique needs of each community

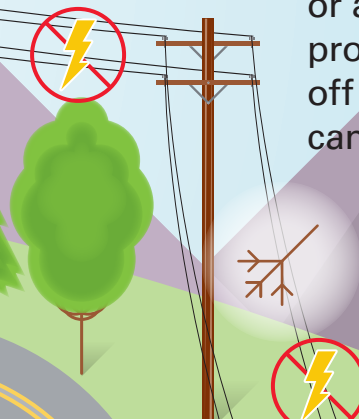


## SUBSTATION

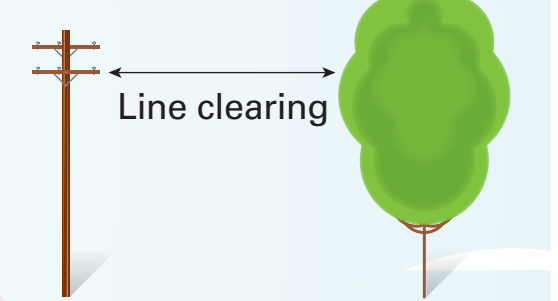


## WILDFIRE SAFETY SETTINGS PILOT

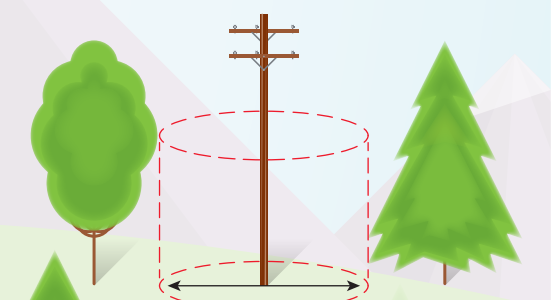
As part of a pilot, we operate our system more conservatively in limited areas when wildfire conditions are elevated—if an object strikes the line or a fault occurs, protective devices shut off the power until it can be safely restored



## VEGETATION MANAGEMENT\*



### Pole brushing



\*In Wildfire Risk Zones on our previously approved maintenance schedule

## SYSTEM HARDENING

System rebuild projects to upgrade electric lines within wildfire zones to wildfire rated equipment

LEARN MORE AT

[XcelEnergyWildfireMitigation.com](https://www.xcelenergy.com/wildfiremitigation)